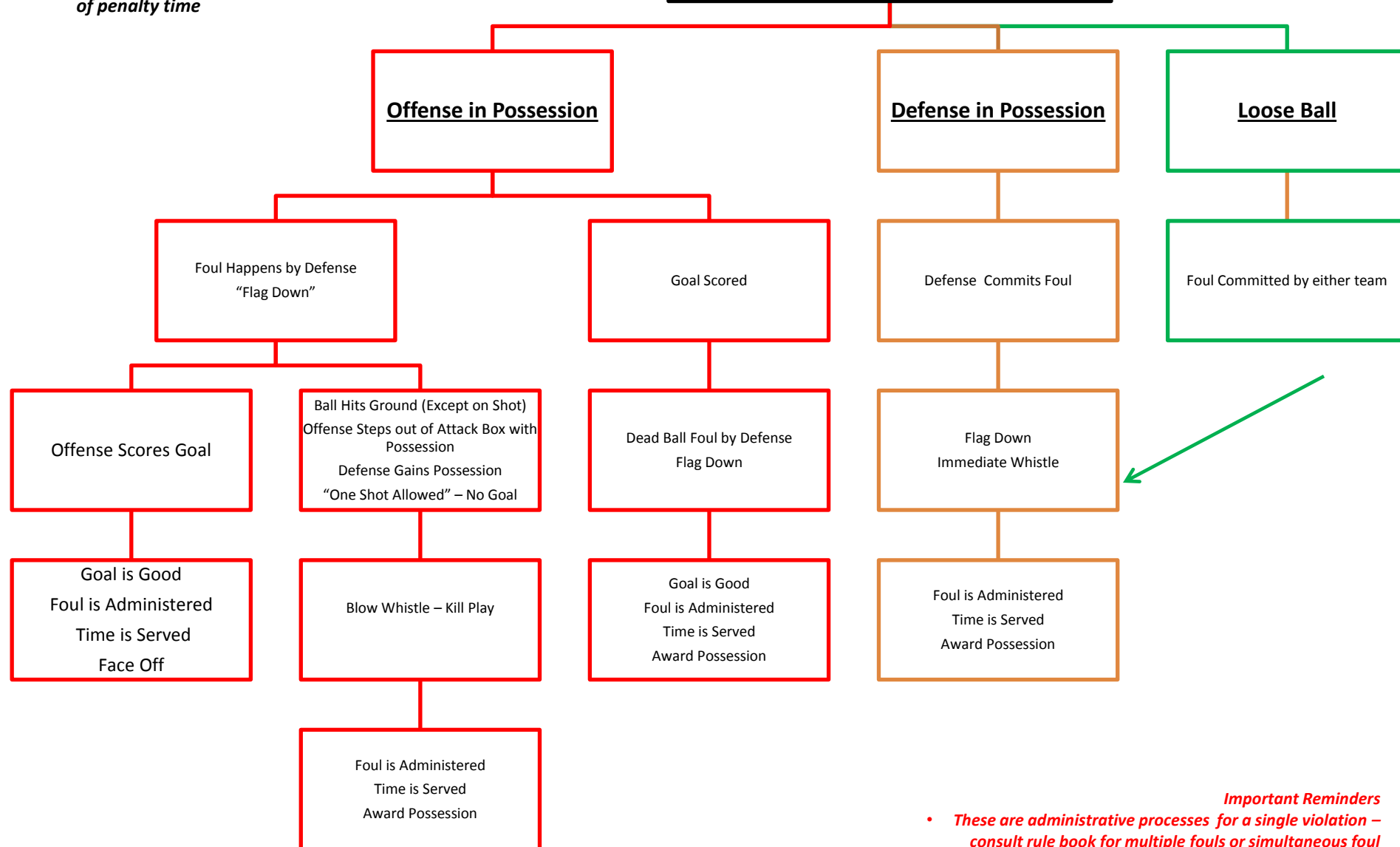


- *Time is always served for all personal fouls.*
- *Flag should always be thrown for personal fouls (Live or Dead Ball).*
- *Personal Fouls are either 1, 2 or 3 minutes of penalty time*

Personal Foul Flow Chart

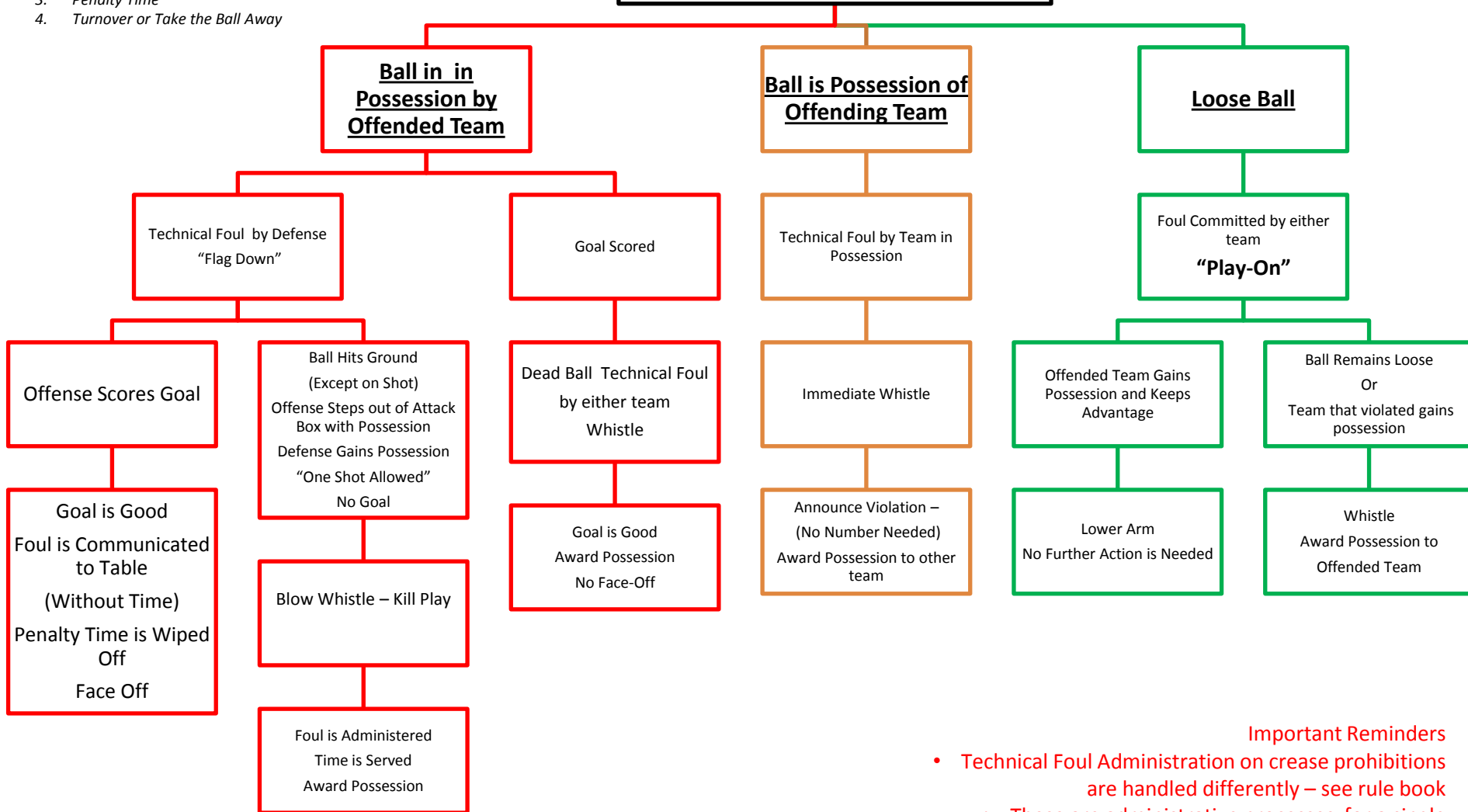


- Important Reminders*
- *These are administrative processes for a single violation – consult rule book for multiple fouls or simultaneous foul situations*

4 things can happen as a result of a technical foul:

1. Nothing (Offended gains possession & maintains Advantage)
2. Award Possession based on offended team not obtaining ball or advantage
3. Penalty Time
4. Turnover or Take the Ball Away

Technical Foul Flow Chart



Important Reminders

- Technical Foul Administration on crease prohibitions are handled differently – see rule book
- These are administrative processes for a single violation – consult rule book for multiple fouls or simultaneous foul situations